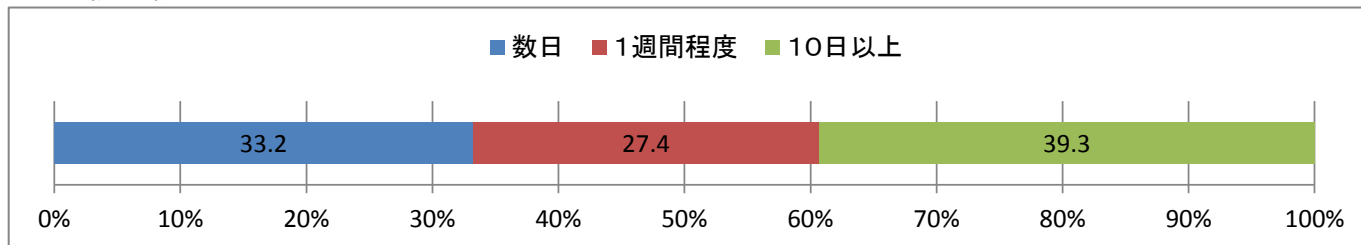


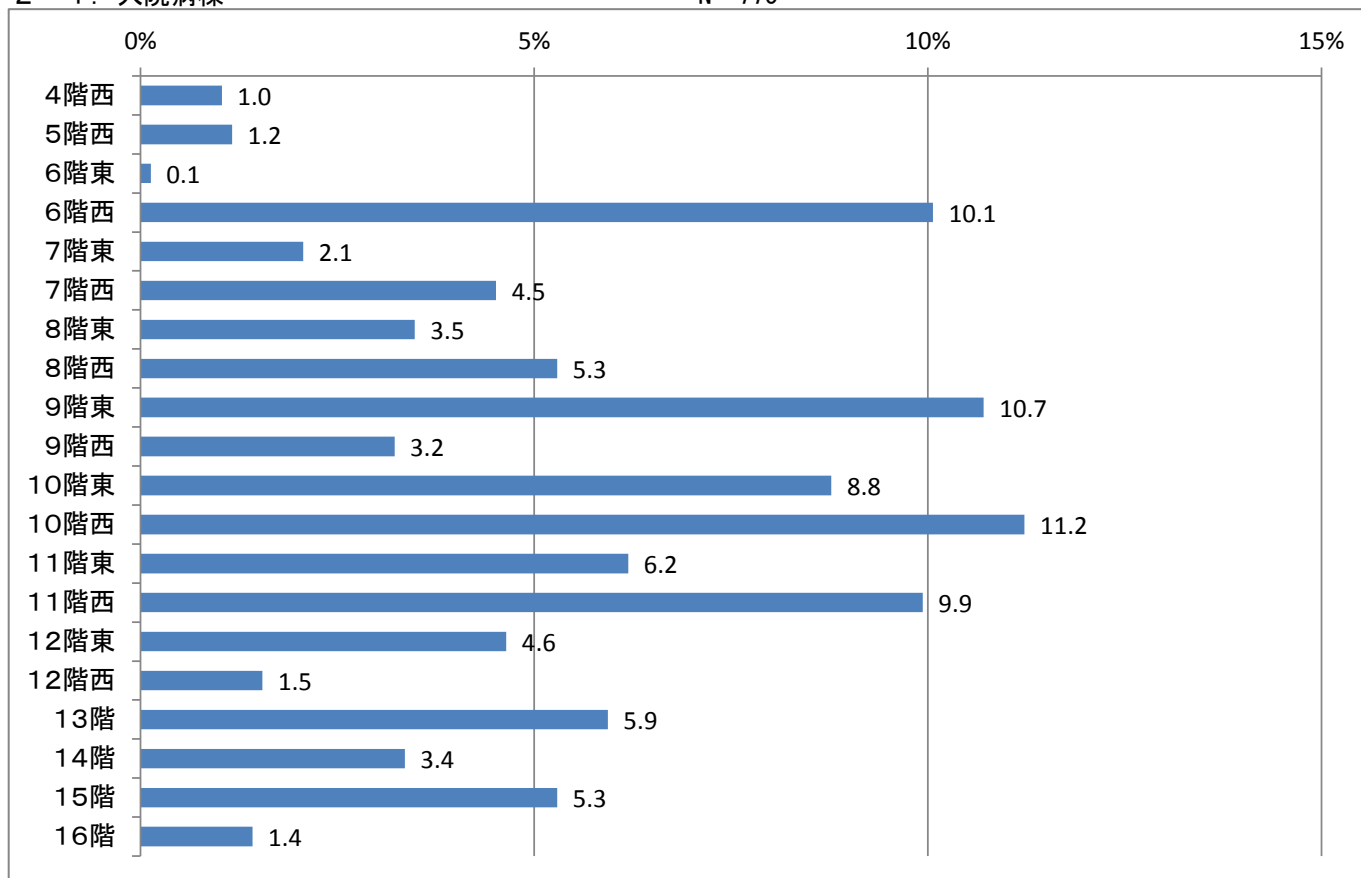
1. 入院日数

N= 707



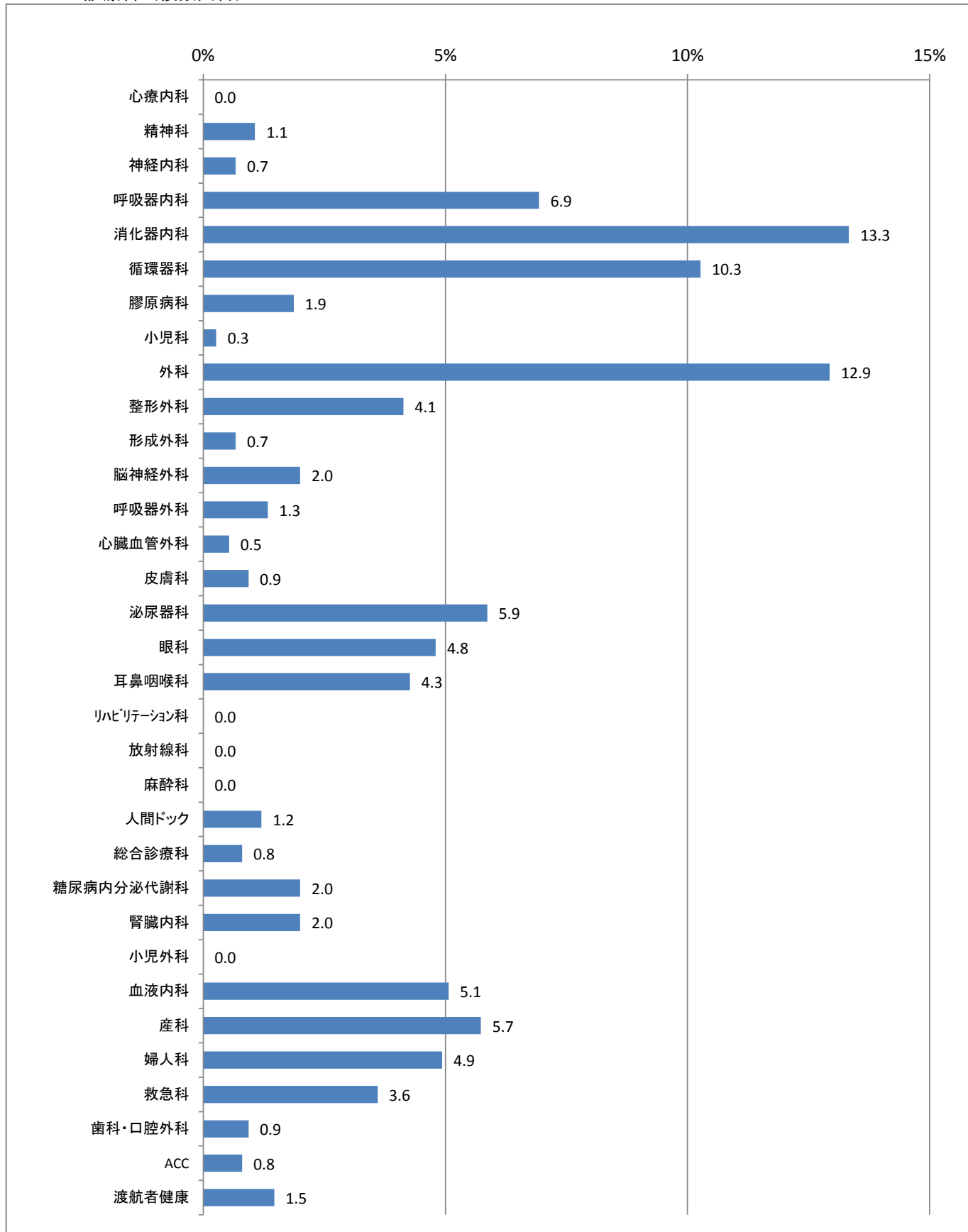
2-1. 入院病棟

N= 775

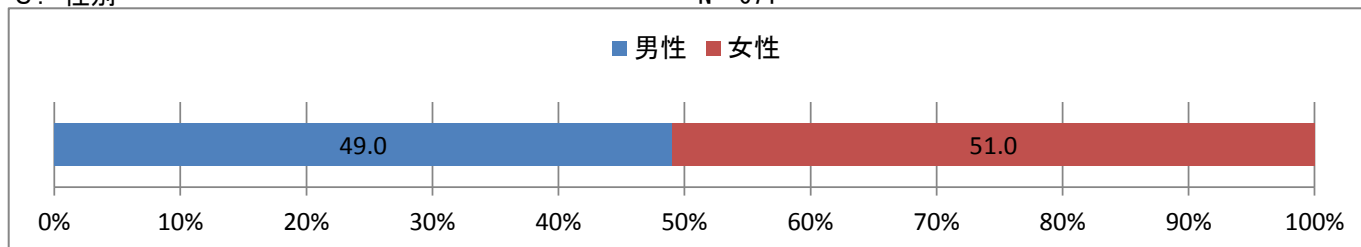


2-2. 診療科（複数回答）

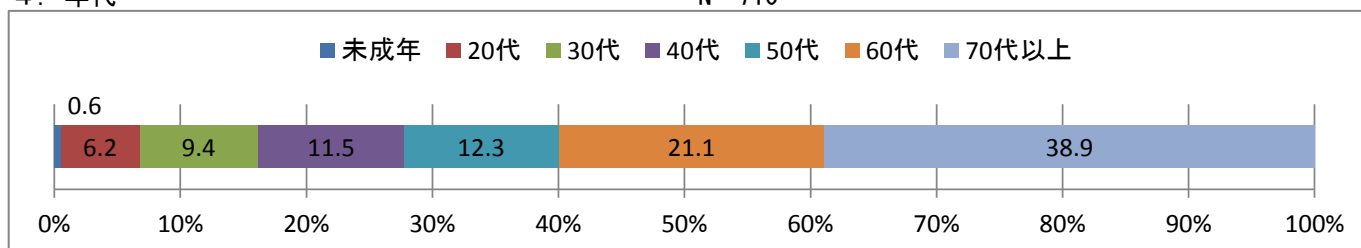
N= 750



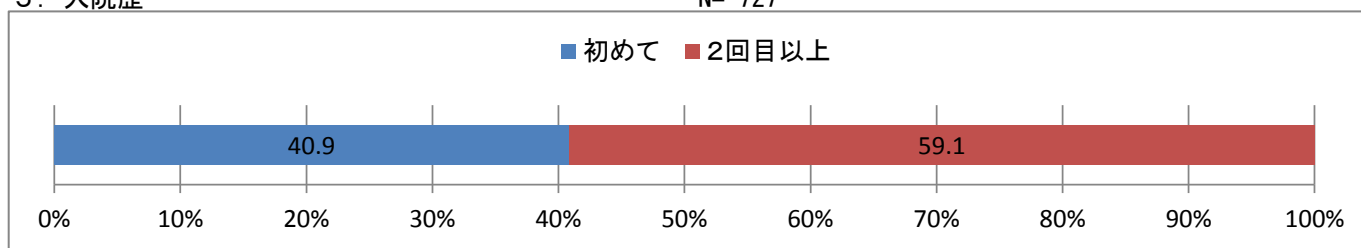
3. 性別 N= 671



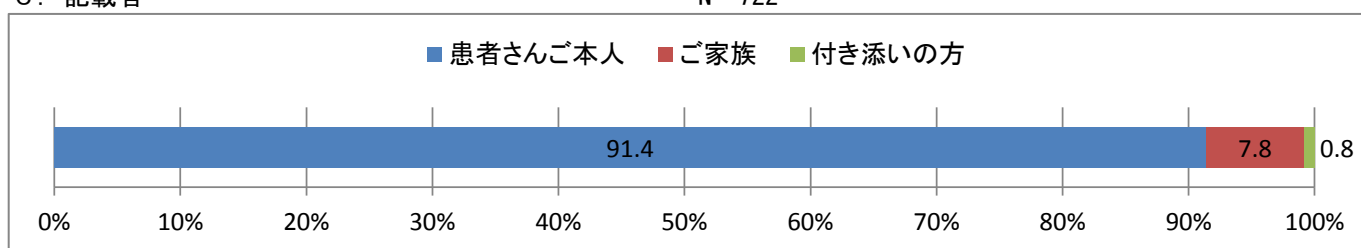
4. 年代 N= 710



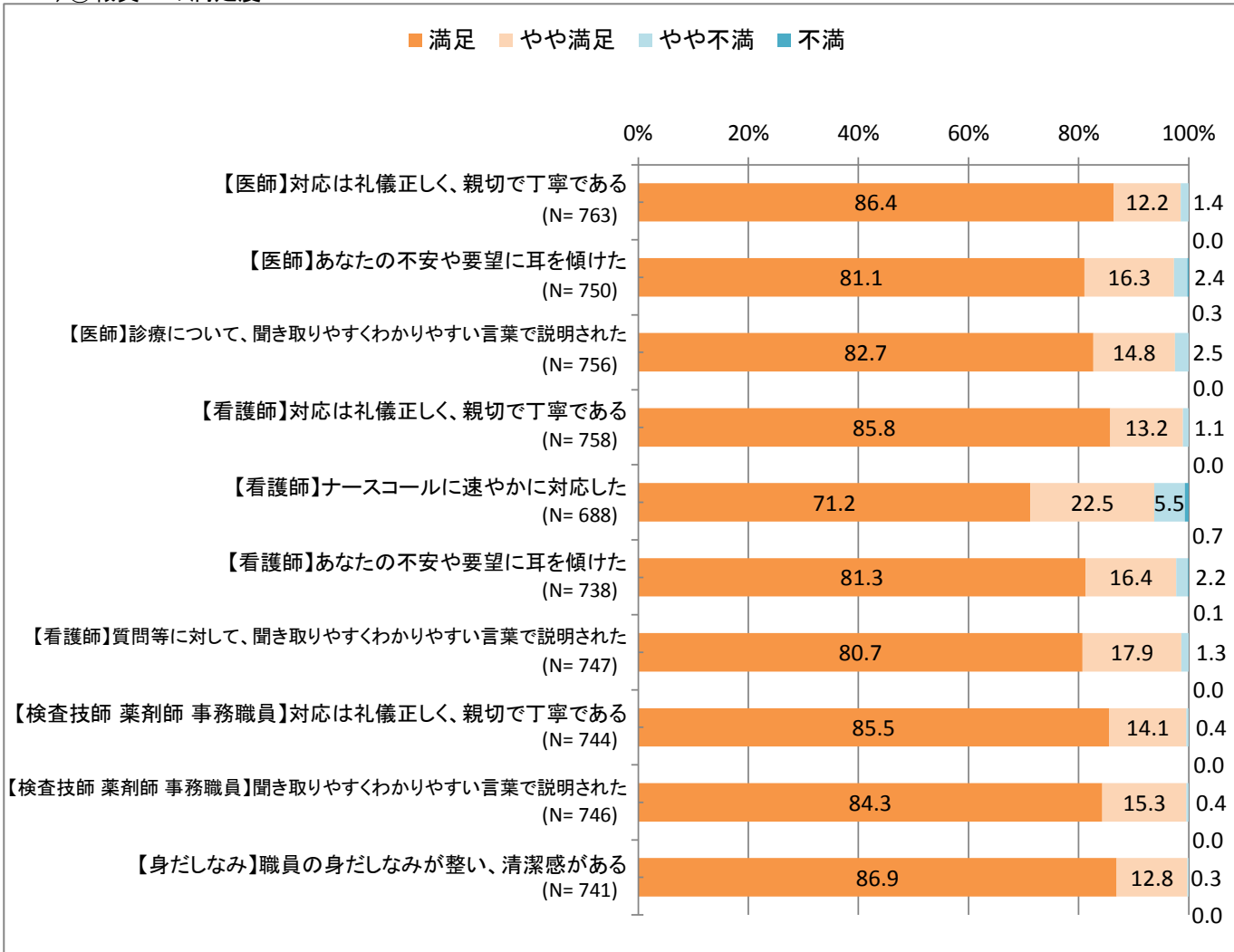
5. 入院歴 N= 727



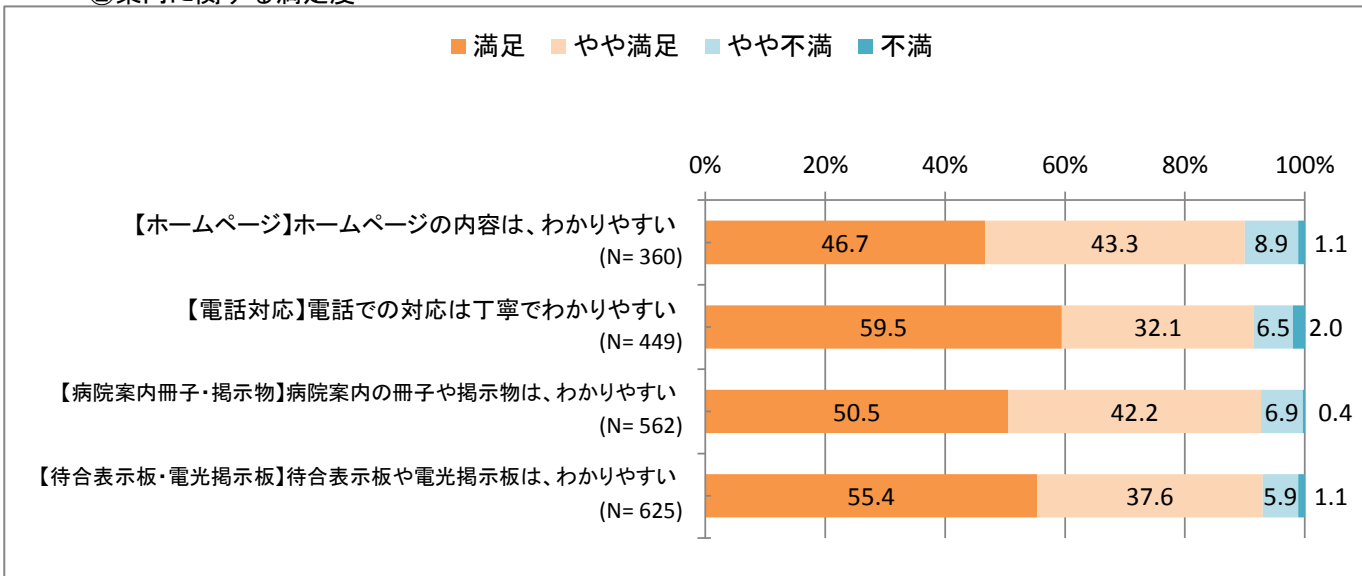
6. 記載者 N= 722



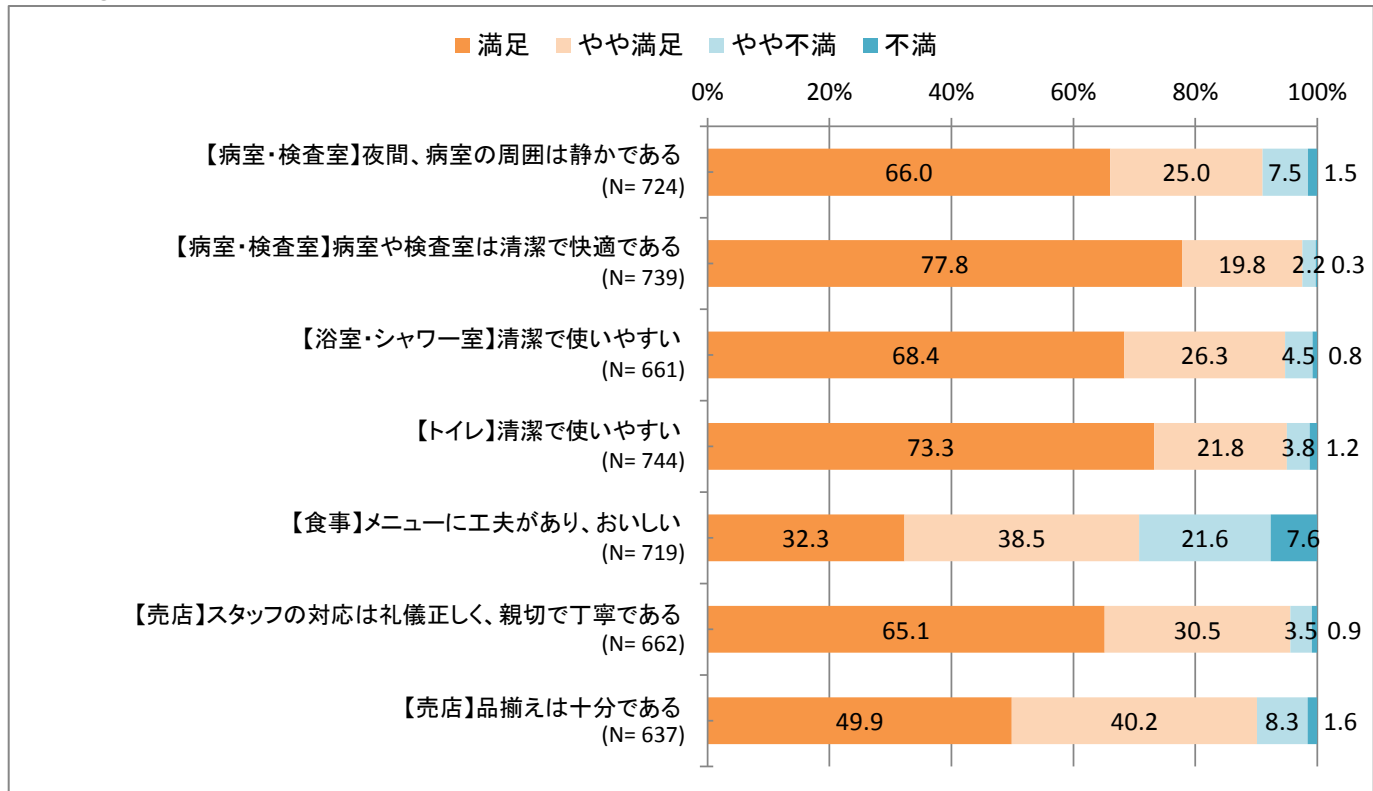
7. 満足度と重要度  
1) ①職員への満足度



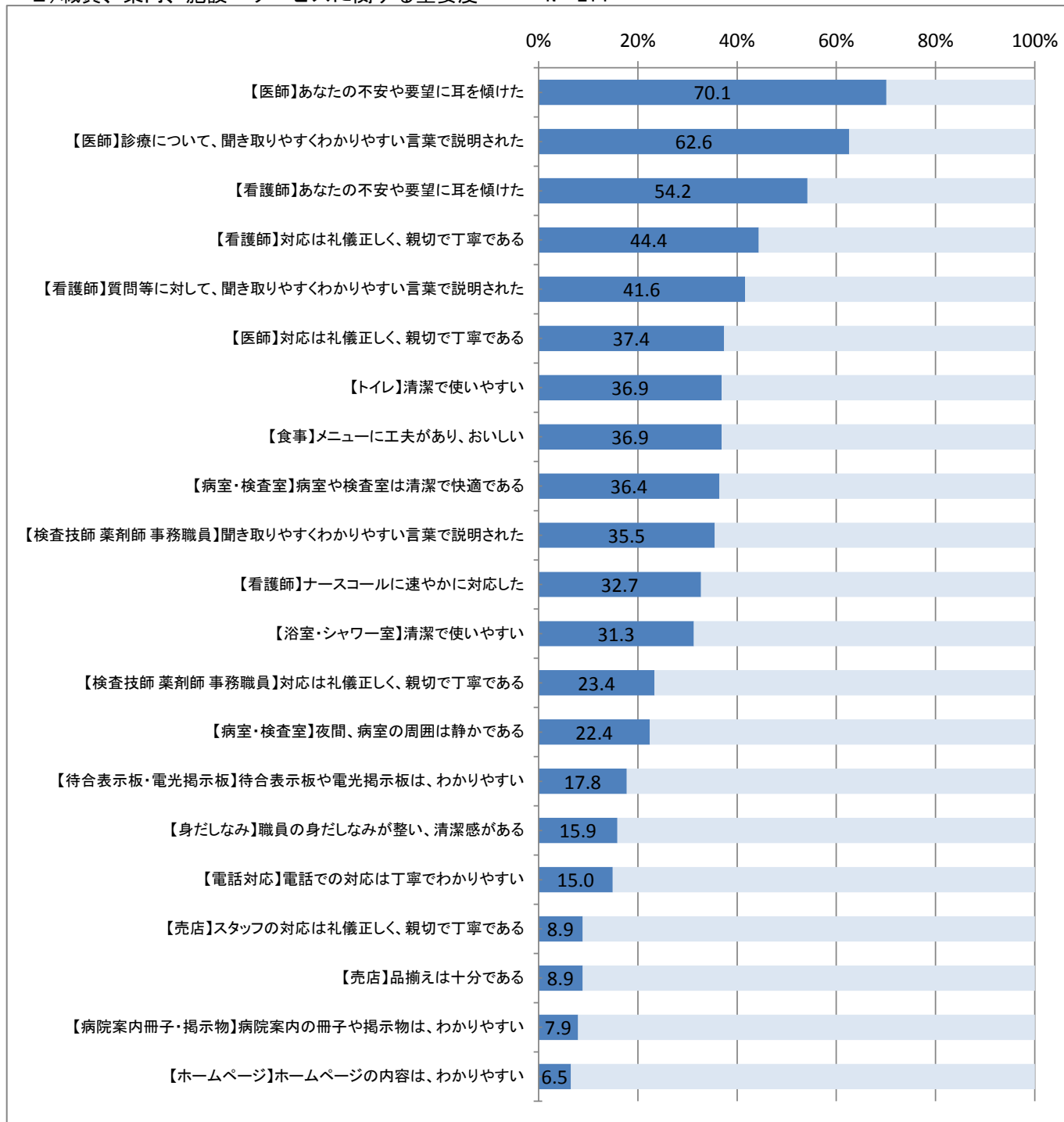
②案内に関する満足度



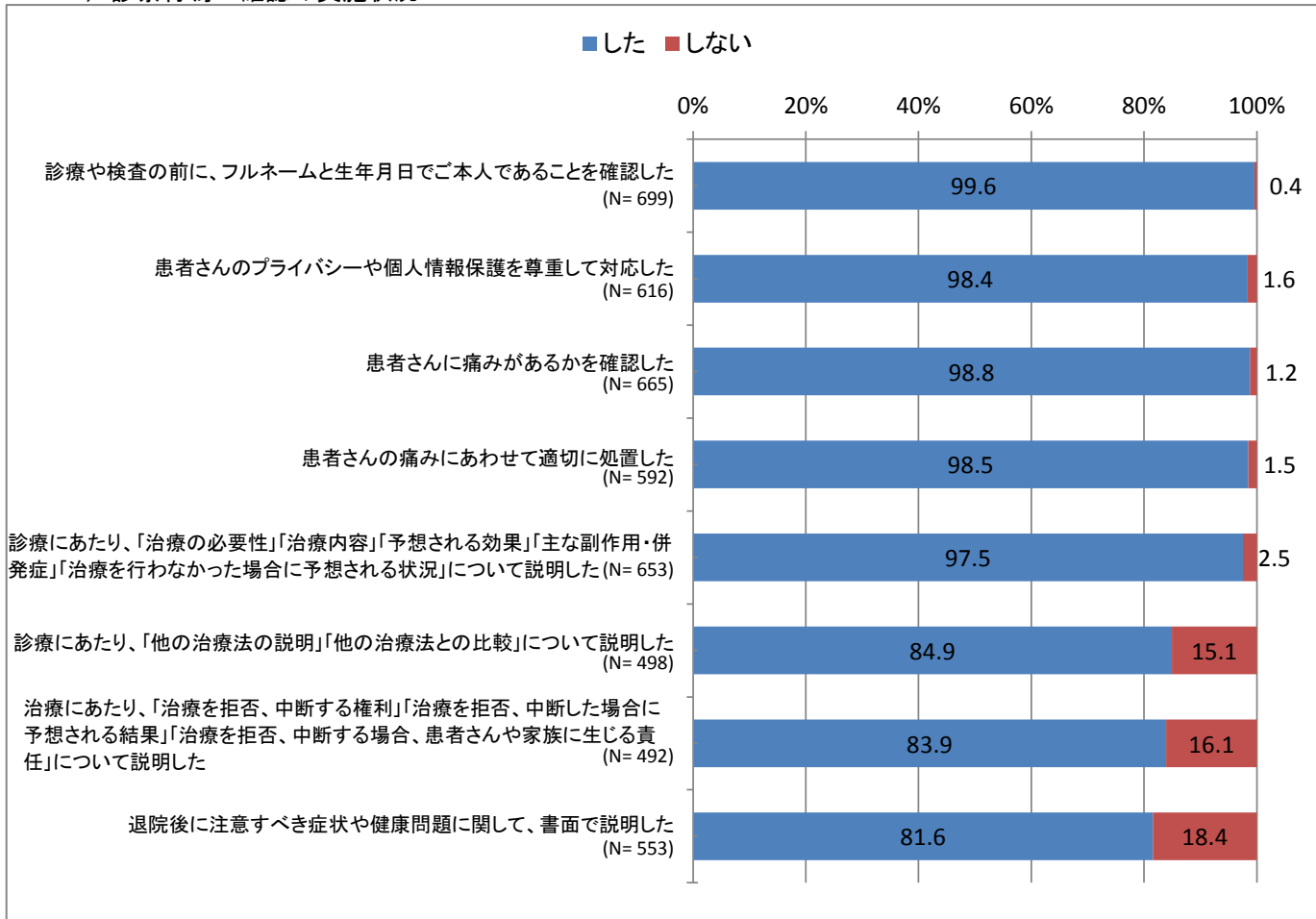
③施設・サービスに関する満足度



2) 職員、案内、施設・サービスに関する重要度 N= 214

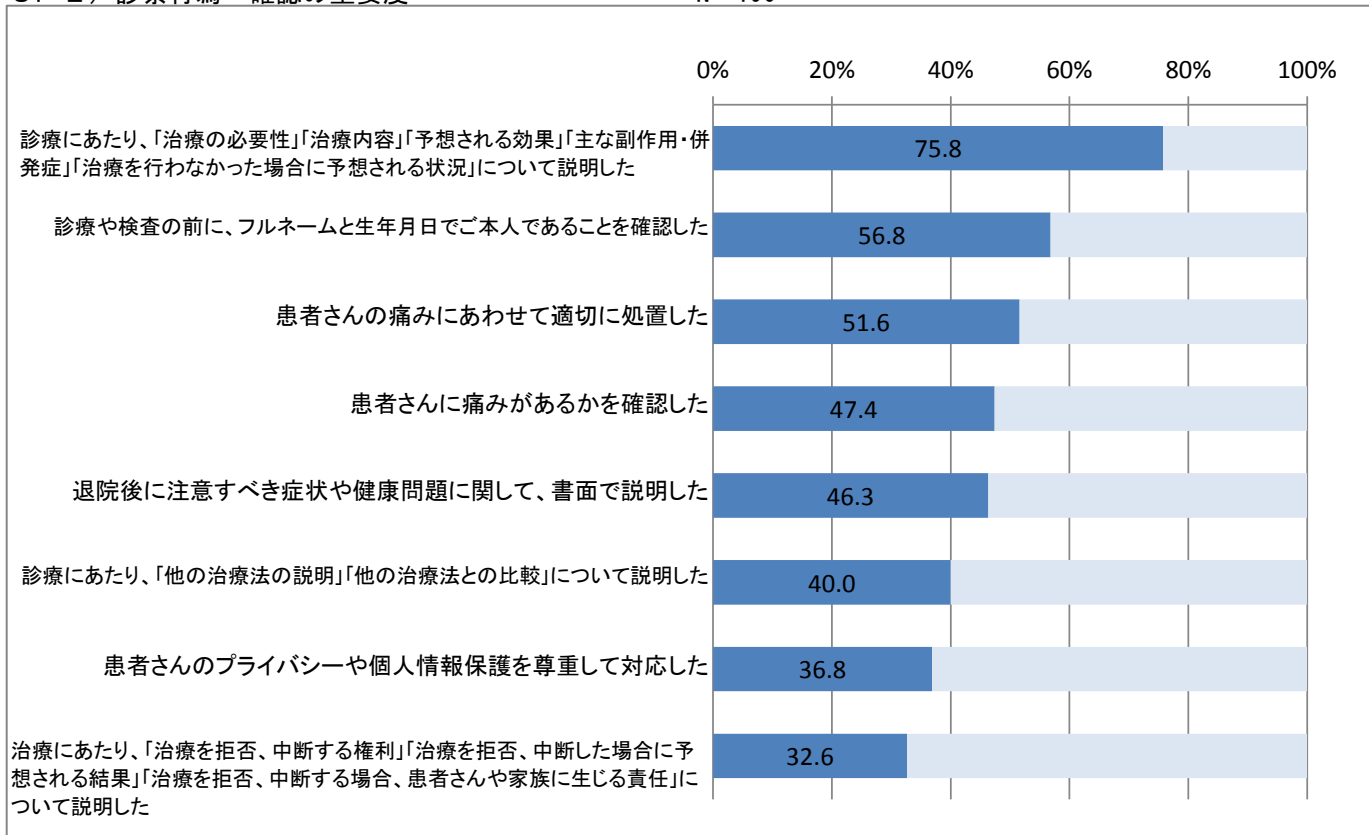


8. 1) 診察行為・確認の実施状況



8. 2) 診察行為・確認の重要度

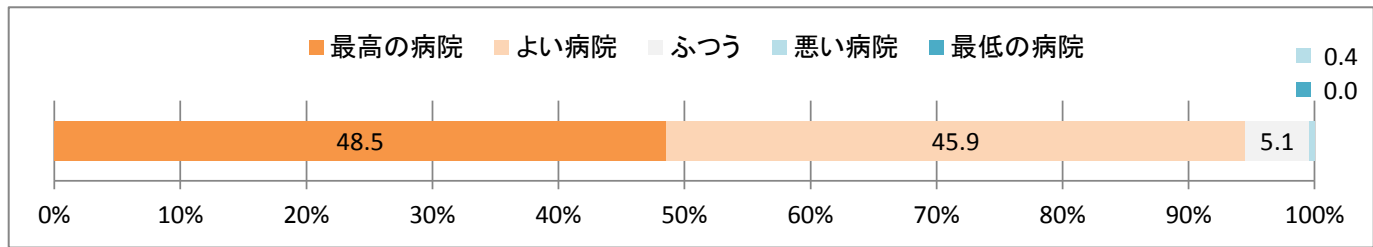
N= 190



9. 総合評価

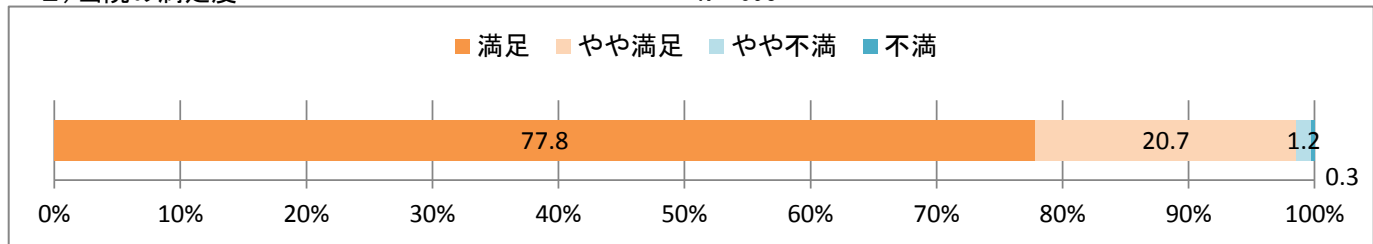
1) 当院の総合評価

N= 682



2) 当院の満足度

N= 695



3) 当院を紹介したいか

N= 684

