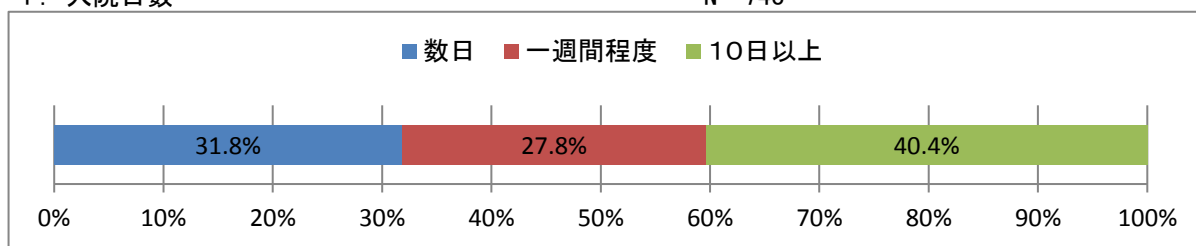


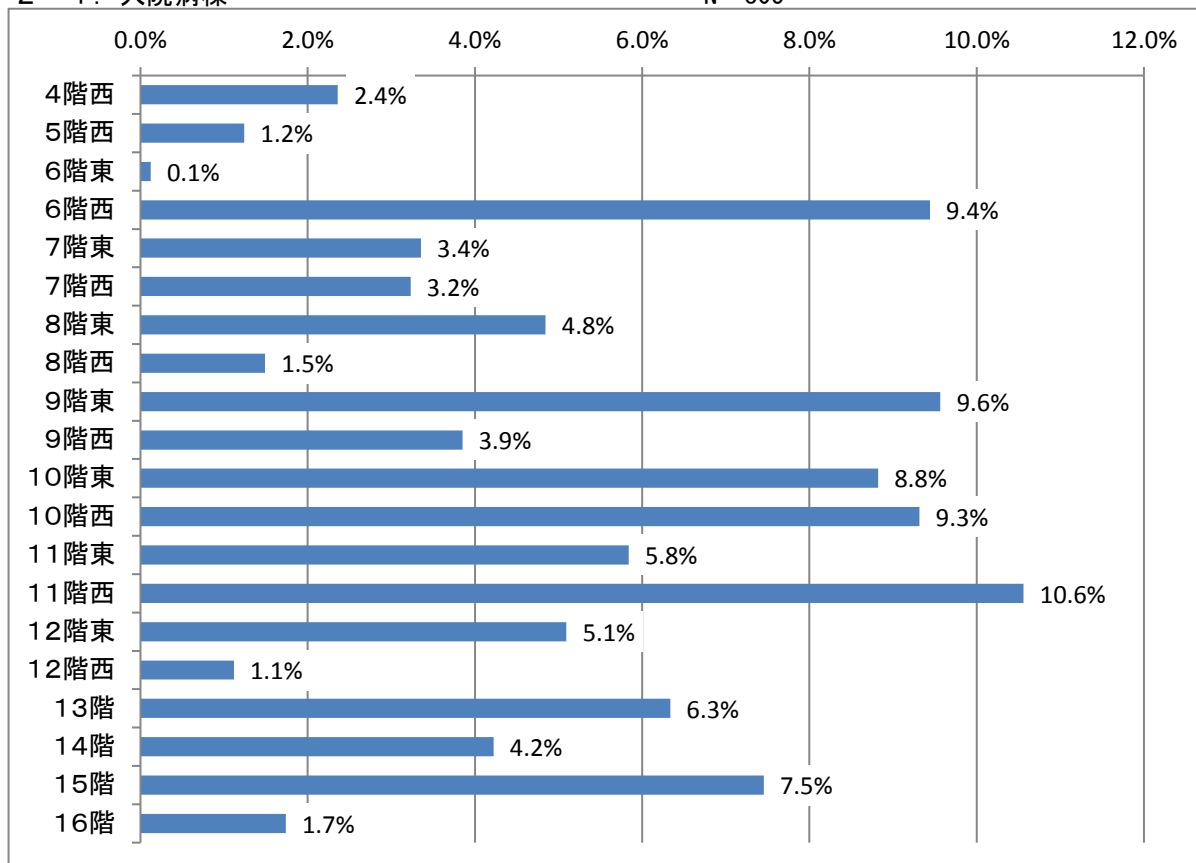
1. 入院日数

N= 748



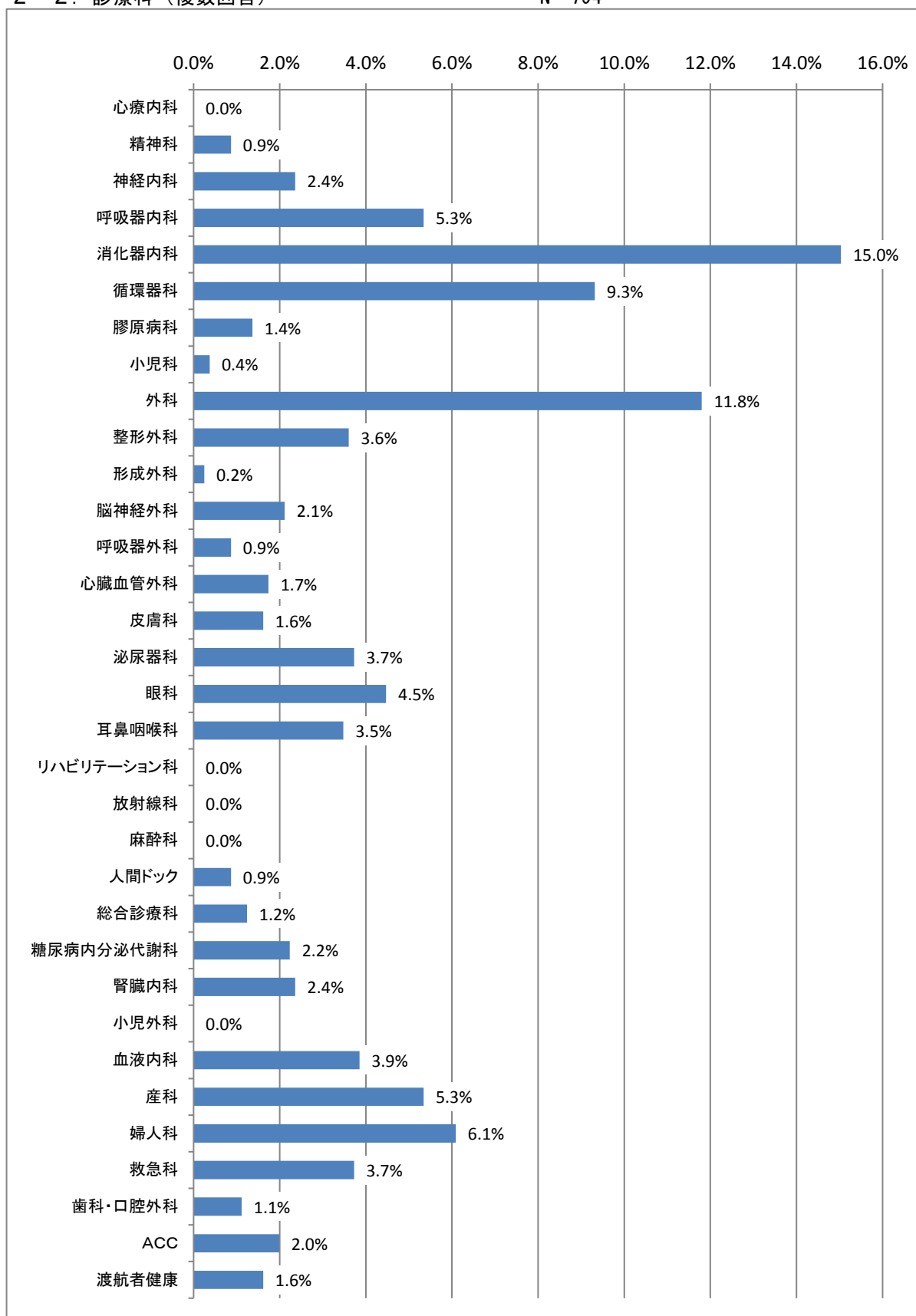
2-1. 入院病棟

N= 805



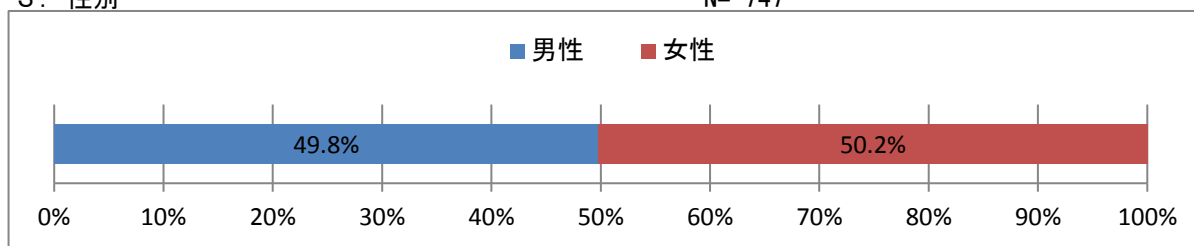
2-2. 診療科（複数回答）

N= 794



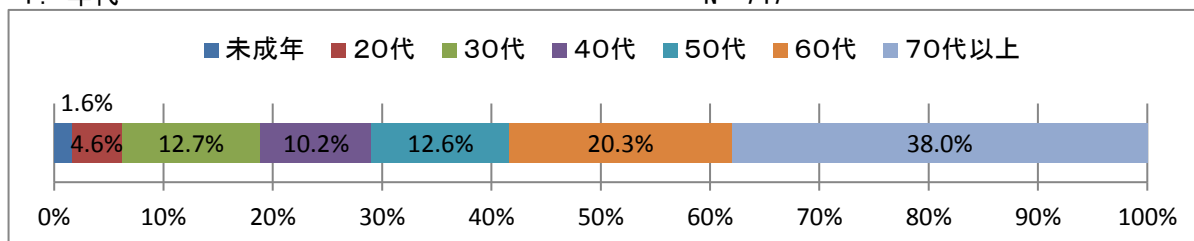
3. 性別

N= 747



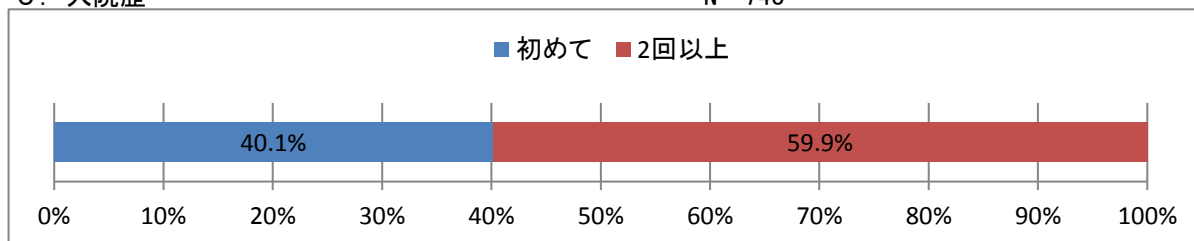
4. 年代

N= 747



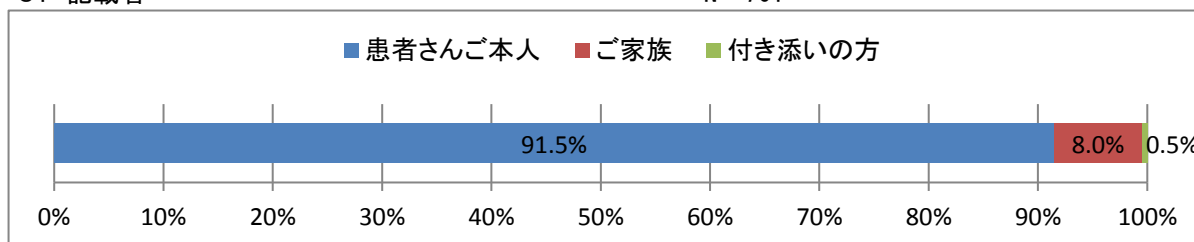
5. 入院歴

N= 748



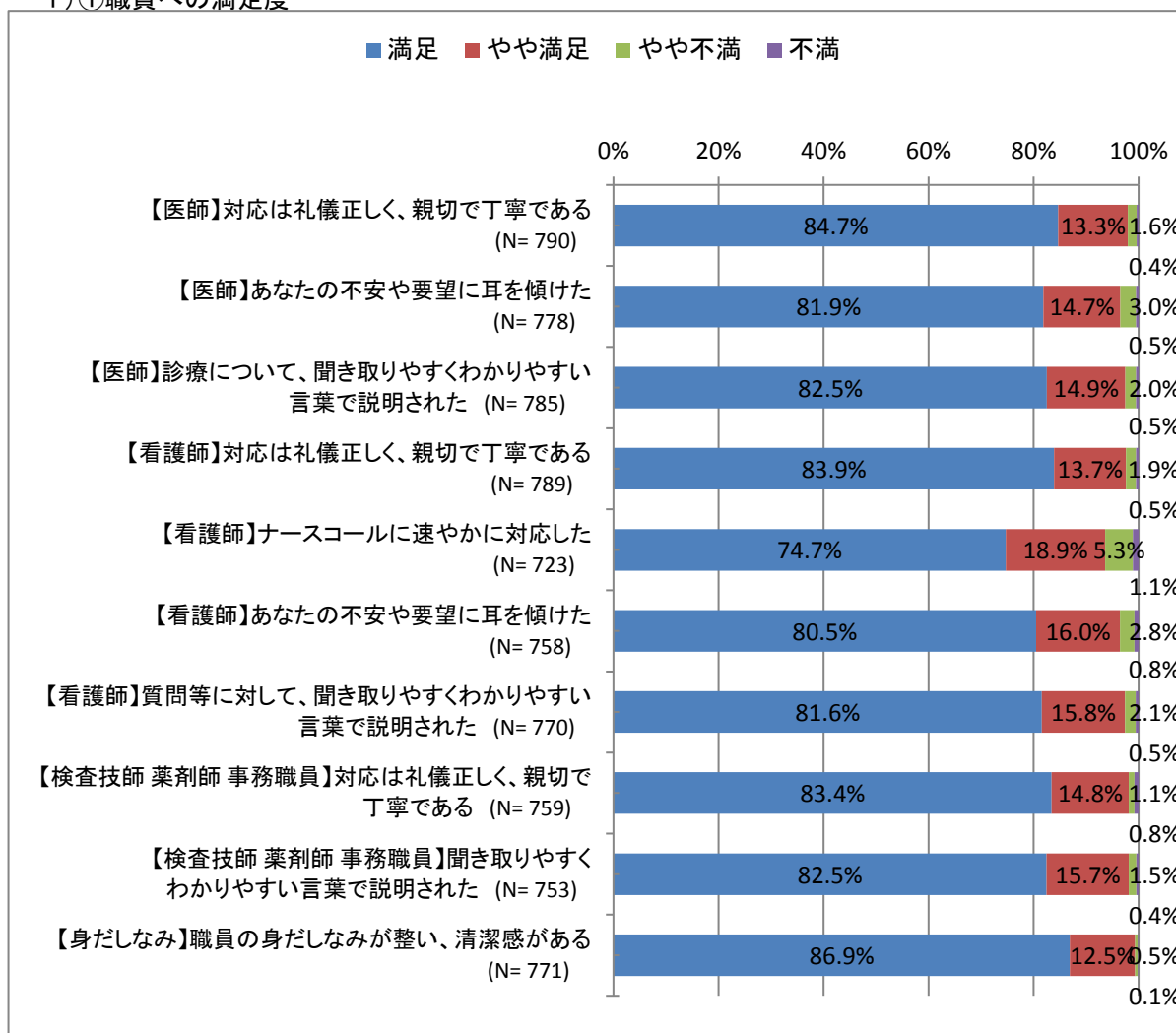
6. 記載者

N= 761

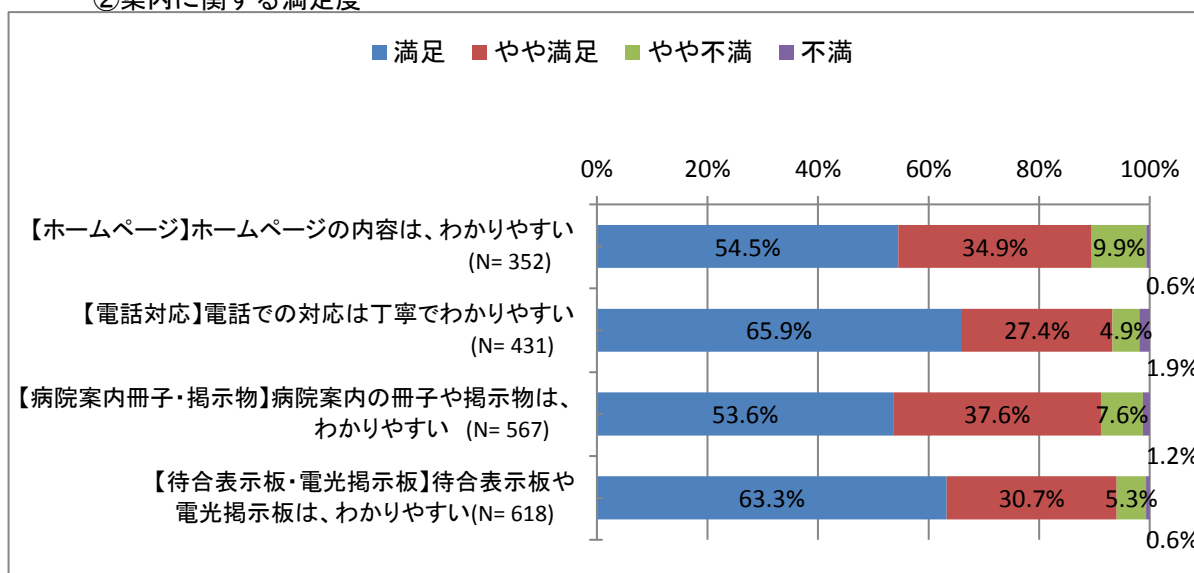


7. 満足度と重要度

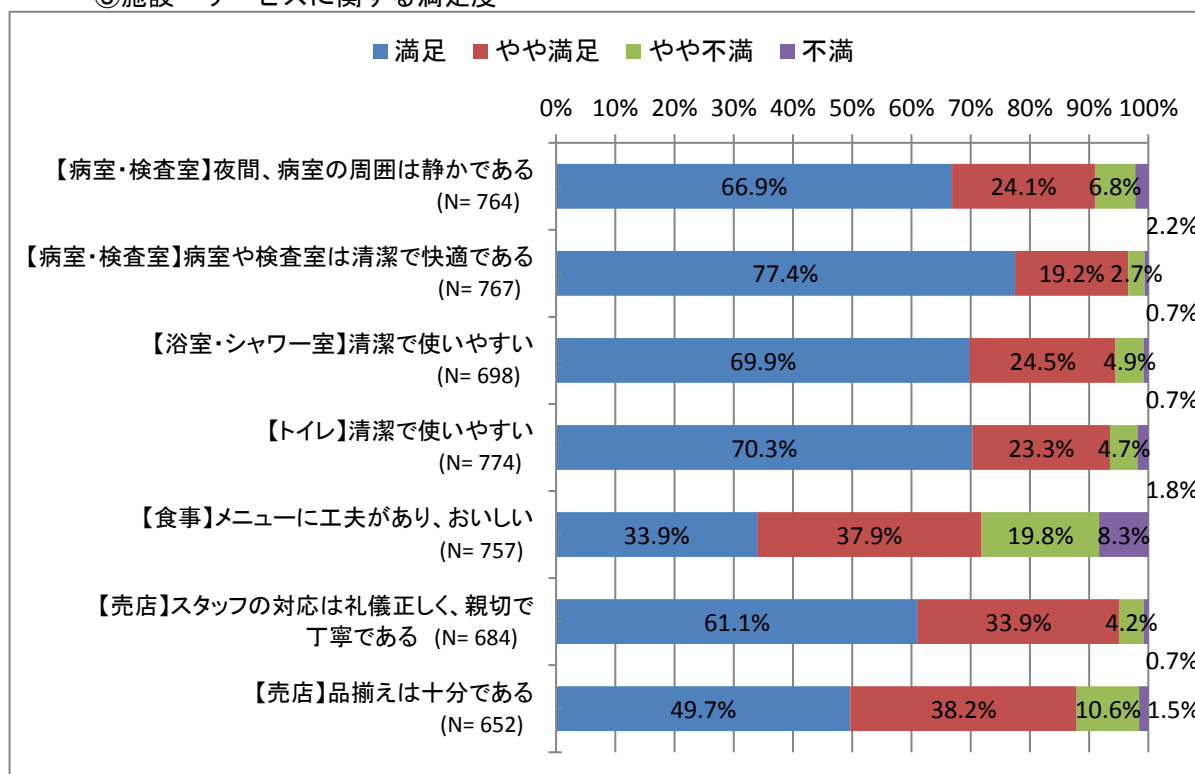
1) ①職員への満足度



②案内に関する満足度

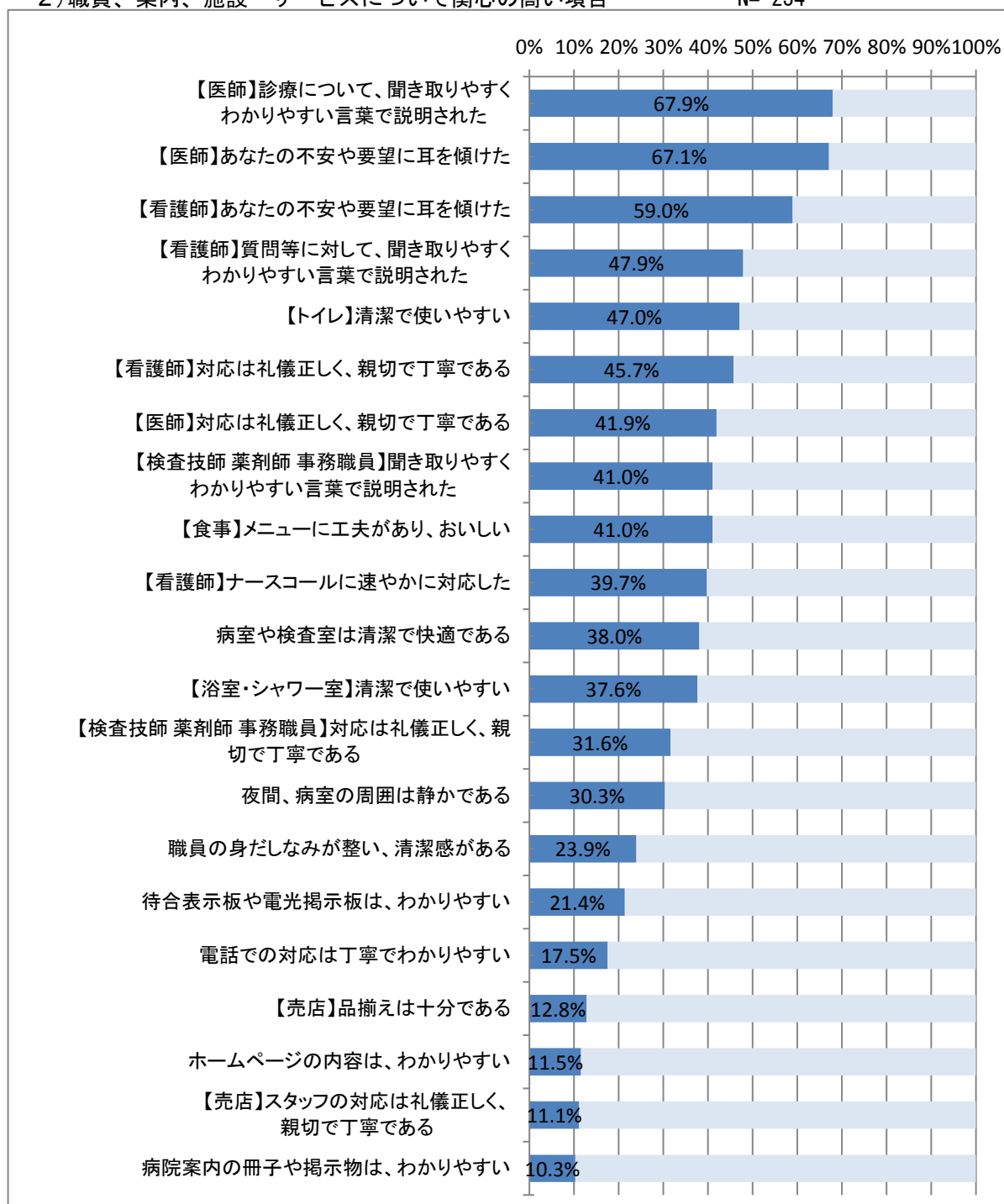


③施設・サービスに関する満足度

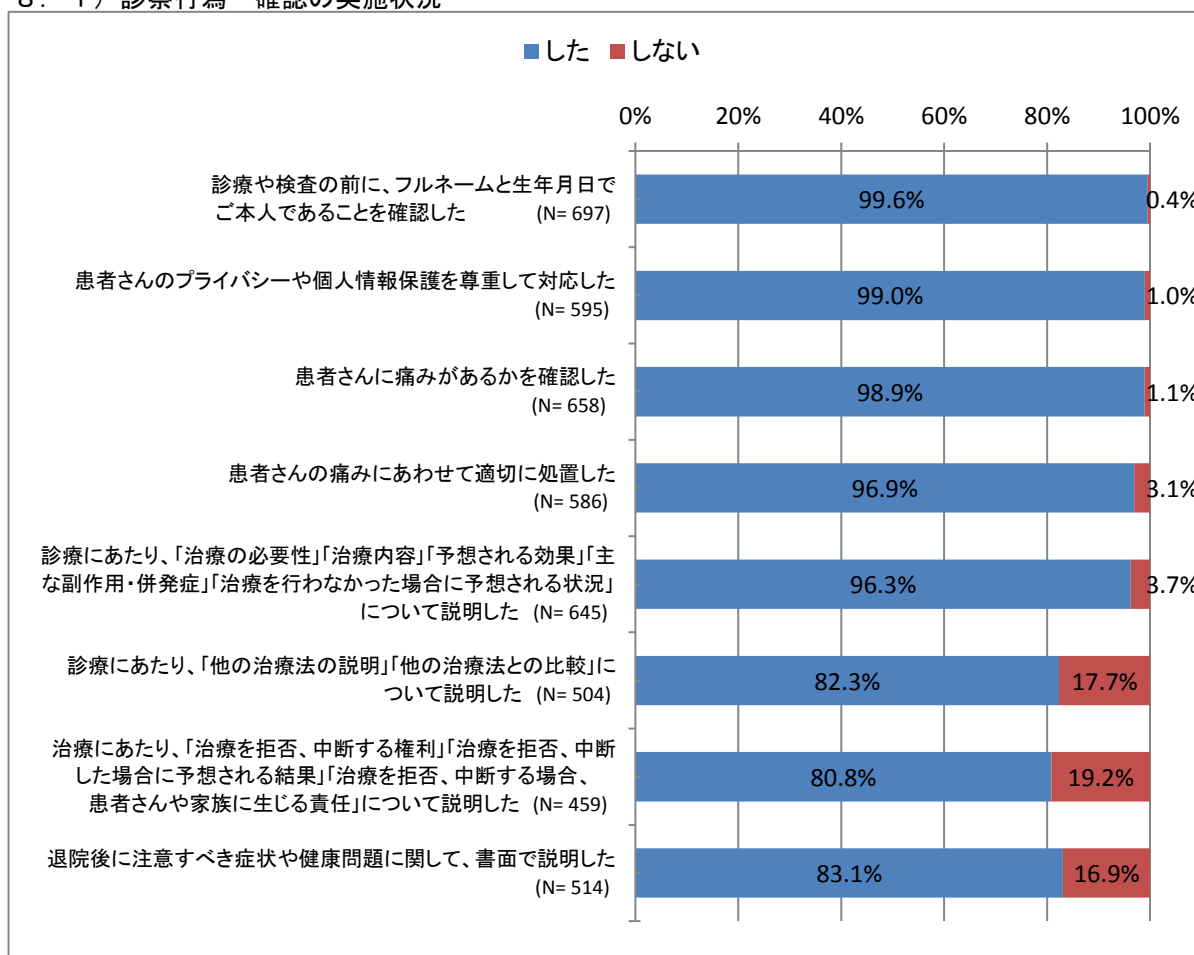


2) 職員、案内、施設・サービスについて関心の高い項目

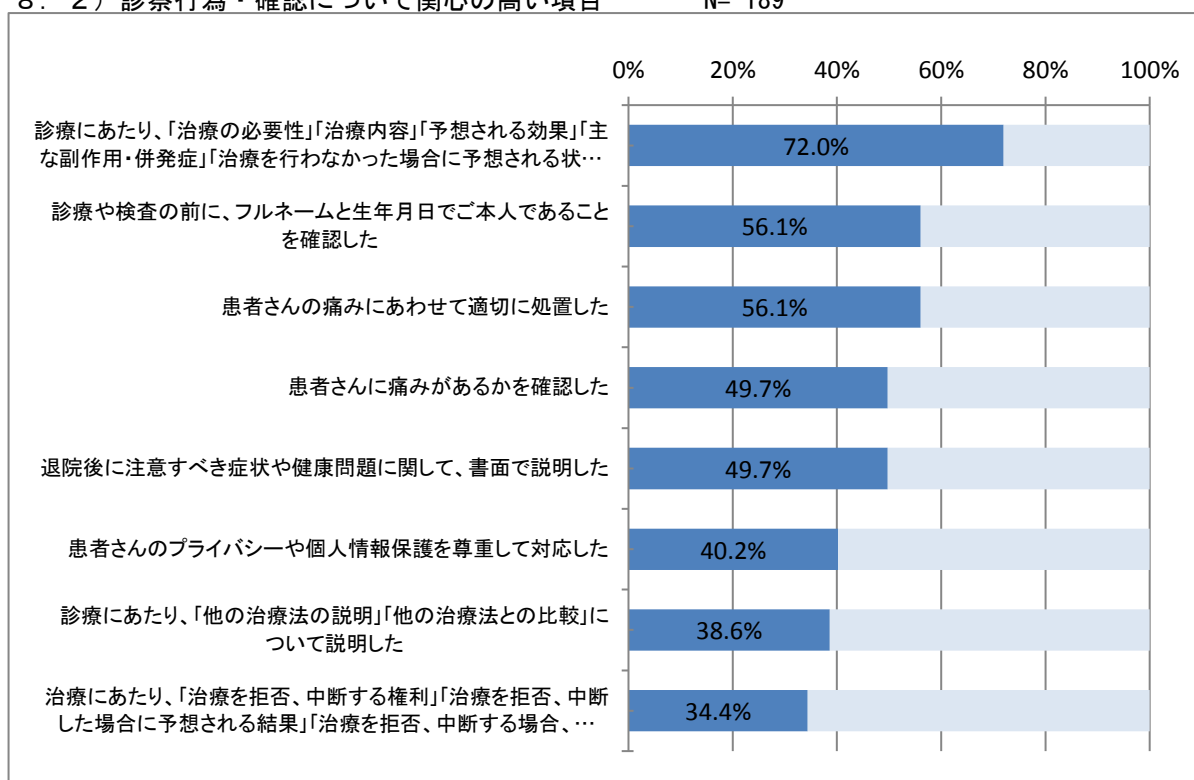
N= 234



8. 1) 診察行為・確認の実施状況



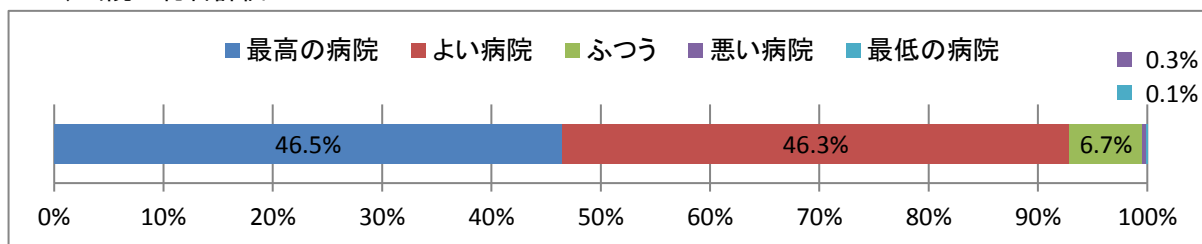
8. 2) 診察行為・確認について関心の高い項目 N= 189



9. 総合評価

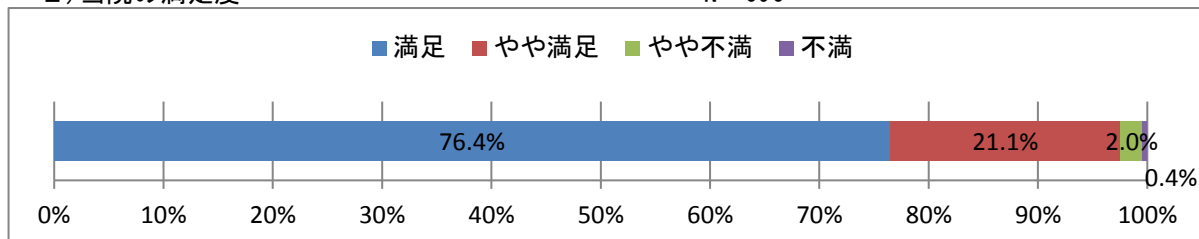
1) 当院の総合評価

N= 684



2) 当院の満足度

N= 696



3) 当院を紹介したいか

N= 670

